

iLed II

More-focused light output

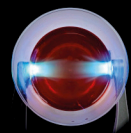
Wide spectrum High light intensity



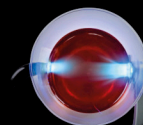
1 SEC FOR CURING

Upgraded focused light output

Unique Woodpecker technology of focused light output reduces 55.87% light angle, allowing more concentrated energy and higher curing efficiency.



iLed II with US A brand



iLed II with US B brand



Tack curing veneer

Magnetic Point Cure Lens

Provides pinpoint curing of small composites and is helpful for tack curing veneers and all porcelain crowns.

3 modes for option



P0(Turbo mode)
Intensity 2700-3000 mw/cm²

Time setting
1s, 3s



P1(High mode)
Intensity 1800-2000 mw/cm²

Time setting
3s, 5s



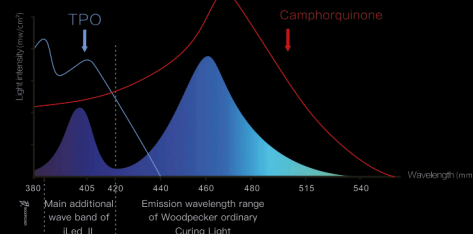
P2(Normal mode)
Intensity 1000-1200 mw/cm²

Time setting
5s, 10s, 15s, 20s

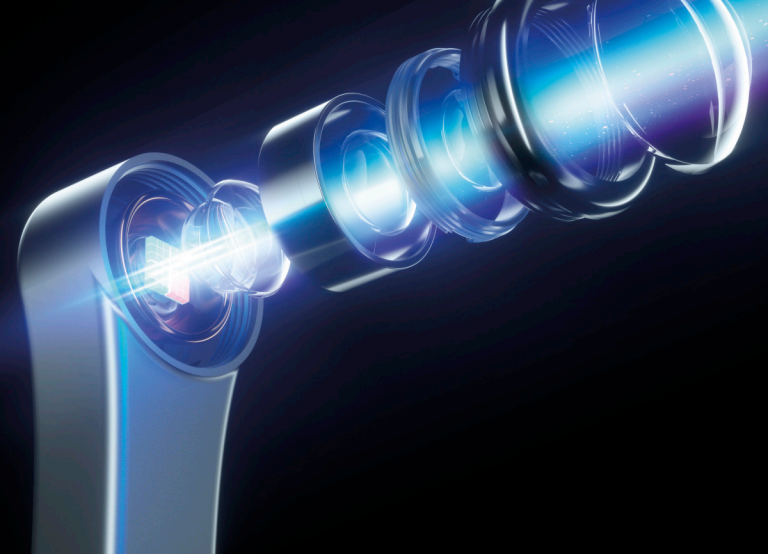
Upgraded wide spectrum

The emission wavelength range of iLed II Wide Spectrum Curing Light is 385nm-515nm, mainly adding the wave band of 385nm-420nm. The additional band can better curing the resin materials containing new-style photoinitiators such as TPO. For example, restoration materials such as Tetric N- Ceram Bulk Fill(Ivoclar), Amelogen Plus (Ultradent), and ENA Hn(Micerium). The additional wave band can also reduce the risk of resin shedding and incomplete curing.

iLed II Spectral Curve and Resin Spectral Absorptivity



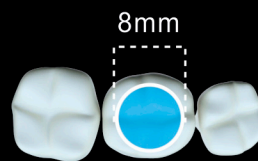
The light absorbing peak of traditional materials(containing camphorquinone, the red line above), is 460nm, so the curing can be done both ordinary Curing Light and Wide Spectrum Curing Light. However, the camphorquinone is yellowish and it is not suitable to add large amount of it to bleached resin or light-colored resin. The light absorbing peak of new material (including TPO, the blue line above) is 405nm. iLed II owns additional wave band of 385nm-420nm which can better curing these materials. TPO is white and is suitable for being added to bleached resins and light-colored resin.



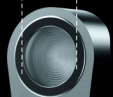
Intensity up to 3000 mw/cm², 1 Sec for curing

3 Modes for option; With the highest intensity up to 2700-3000 mw/cm², curing 2 mm resin in 1 second. Which make it especially suitable for orthodontic brackets, porcelain veneers, post-core adhesives and pit and fissure sealant.

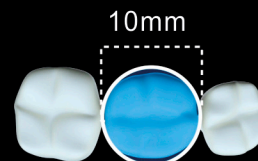
Competitors



8mm



iLed II



10mm



1SEC
FOR CURING

Bring you fresh experience

CONSTANT POWER OUTPUT

Born for teeth restoaation

FLUID DESIGN

Better hand feeling

360° CURING

Reach every angle

1 SEC. FOR CURING

2mm resin



Guilin Woodpecker Medical Instrument Co., Ltd.
Information Industrial Park, Guilin National High-Tech
Zone, Guilin, Guangxi, 541004 P. R. China
Sales Dept.: +86-773-5873196
E-mail: woodpecker@glwoodpecker.com
Website: http://www.glwoodpecker.com



MedNet EC-Rep GmbH
Borkstrasse 10-48163 Muenster-Germany

DISTRIBUTED BY:

